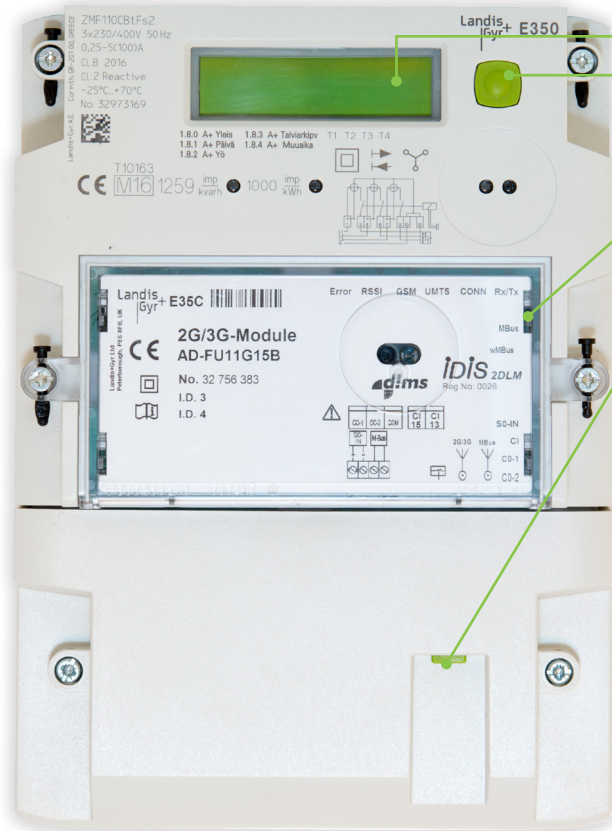


E350 meter



1. Meter display
2. Display scroll button
3. Communication status LED indicators
4. Switching button

If you want to disconnect the electricity in your apartment, you should primarily use the switching button on the meter. This way, the remote connection with the meter is maintained, but the electricity is cut off. Reconnecting is done by pressing the same button. When the switching button is pressed, the LED communication indicators start to flash for about 10 seconds.

PLEASE NOTE! For the duration of electrical work, the electricity must be disconnected from the main switch or the main fuse!

Monitoring consumption on the meter display

The display shows the total energy reading. The display's scroll button can be used to browse the consumption of different tariffs according to your electricity contract. The reading identifier shows you what the energy reading is on the screen.



① Status identifier:

- electricity disconnected
- no identifier when the electricity is on

② Energy reading

③ Reading identifier

- 1.8.0 - total energy reading
- 1.8.1 - day or winter estimate energy reading, depending on the contract
- 1.8.2 - night or other time energy reading, depending on the contract
- 2.8.0 - small-scale generation A energy register
- 0.9.1 - time
- 0.9.2 - date